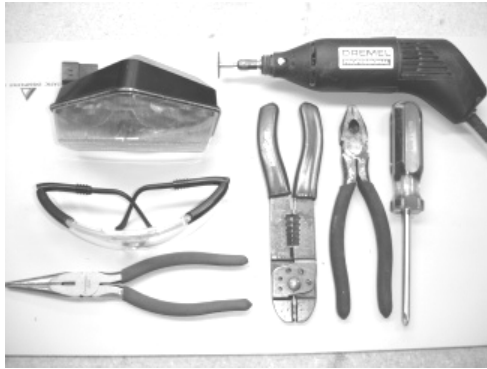


# CUSTOM LED 2005-2008 TRIUMPH SPEED TRIPLE AND SPRINT ST INTEGRATED LED TAIL LIGHT INSTALLATION INSTRUCTIONS

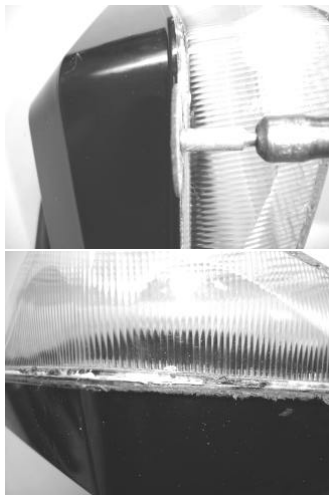
## GETTING READY



- ### ITEMS YOU WILL NEED
- 1) DREMOL WITH SMALL CUTTING WHEEL OR EQUIVALENT
  - 2) PLIERS
  - 3) WIRE SNIPS
  - 4) FLAT HEAD SCREWDRIVER
  - 5) PHILLIPS HEAD SCREWDRIVER
  - 6) EYE PROTECTION
  - 7) STOCK LED TAIL LIGHT REMOVED FROM BIKE.
  - 8) GLUE GUN
  - 9) CRAZY GLUE (OR EQUIVALENT)
  - 10) LATEX GLOVES



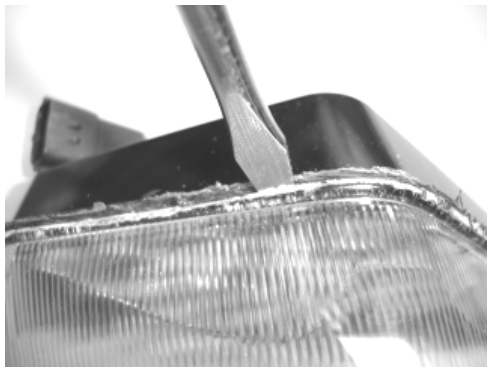
## GETTING STARTED



- 1) PLACE THE TAIL LIGHT ASSEMBLY ON A SOFT SURFACE TO AVOID SCRATCHING OR DAMAGING THE LENS DURING THE CUTTING OPERATION.
- 2) POSITION YOUR CUTTING WHEEL AS SHOWN IN THE PICTURE TO THE LEFT WHERE THE CLEAR PART OF THE LENS MEETS THE BLACK PART.
- 3) PROCEED TO CUT INTO THE CLEAR LENS APPROXIMATELY HALF OF THE THICKNESS, ALL THE WAY AROUND THE PERIMETER OF THE LENS – **BE SURE NOT TO CUT ALL THE WAY THROUGH BECAUSE IT WILL NOT GLUE BACK TOGETHER PROPERLY. SEE "TIPS FOR CUTTING YOUR LENS" BEFORE BEGINNING.**

*IT IS HIGHLY RECOMMENDED THAT YOU USE LATEX GLOVES DURING THIS ENTIRE PROCESS. THIS WILL SAVE YOU LOTS OF CLEANING EFFORT LATER.*

## TIPS FOR CUTTING YOUR LENS



- A) KEEP THE CUTTING WHEEL MOVING AND APPLY LIGHT PRESSURE. SITTING IN ONE SPOT WILL JUST MELT THE PLASTIC.

*WHEN YOU MAKE YOUR WAY AROUND THE ENTIRE PERIMETER, CLEAN ALL THE BURRED PLASTIC FROM AROUND THE EDGES AND FROM INSIDE THE GROOVE YOU'VE MADE.*

## OPENING THE LENS

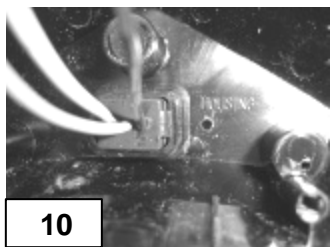
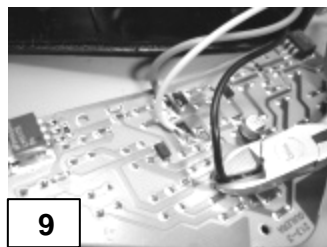
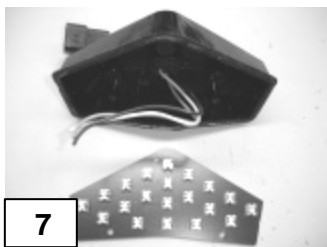
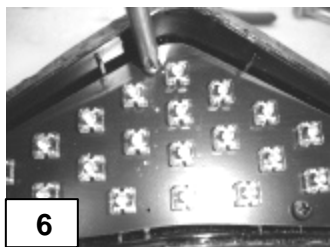


- 4) PLACE THE TIP OF A FLAT HEAD SCREWDRIVER IN THE GROOVE YOU HAVE CREATED.

- 5) GENTLY TWIST THE SCREWDRIVER TO CRACK THE GLUE ALONG THE GROOVE.

NOTE: AS SOON AS YOU HEAR THE SOUND OF THE GLUE GIVING (A CRACK), MOVE THE SCREWDRIVER SLIGHTLY AND ADVANCE THE CRACK. SLOW AND STEADY IS THE NAME OF THE GAME HERE. IF YOU FIND A HARD SPOT, WEAKEN IT WITH THE CUTTING WHEEL AS NECESSARY.

THE HARD PART IS OVER! YOU CAN RELAX NOW!



6) REMOVE THE SCREWS HOLDING THE STOCK LED BOARD TO THE HOUSING (YOU WILL BE REUSING THE SCREWS SO PUT THEM TO THE SIDE).

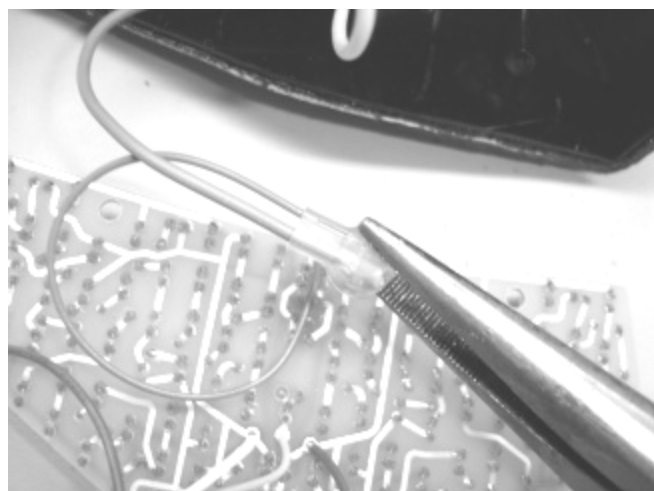
7) REMOVE THE STOCK LED ASSEMBLY FROM THE LENS HOUSING AND TURN IT FACE DOWN TO EXPOSE THE WIRING BEHIND.

8) SNIP OFF THE WIRES THAT CONNECT TO THE LED CIRCUIT BOARD AS CLOSE TO THE CIRCUIT BOARD AS POSSIBLE.

9) PLACE THE STOCK LED CIRCUIT BOARD OUT OF THE WAY. YOU WILL NO LONGER NEED THIS PART, DISPOSE OF IT AS YOU WISH.

10) DRILL A HOLE IN THE BACK SIDE OF THE ENCLOSURE IN THE LOCATION SHOWN IN FIGURE 10. THIS HOLE WILL BE USED TO ROUTE THE TWO BLINKER WIRES (RED AND WHITE) OUT OF THE ENCLOSURE. CHOOSE A BIT SIZE THAT IS ONLY AS LARGE AS NECESSARY TO FIT THE TWO WIRES THROUGH THE HOLE.

### WIRING UP YOUR CUSTOM LED BOARD



PLACE YOUR CUSTOM LED INTEGRATED TAIL NEXT TO THE HOUSING, AND MATCH THE WIRE COLORS AS FOLLOWS: ***TRY TO HANDLE THE CIRCUIT BOARD AS LITTLE AS POSSIBLE AS FINGERPRINTS AND DIRT WILL HINDER THE PERFORMANCE.***

- BLACK ON HARNESS TO 6" BLACK ON CUSTOM LED BOARD
- GREEN ON HARNESS TO 6" GREEN ON CUSTOM LED BOARD
- YELLOW ON HARNESS TO 6" YELLOW ON CUSTOM LED BOARD

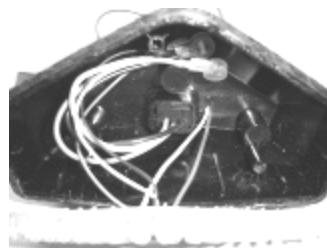
USE THE THREE (3 OF 5) SUPPLIED ORANGE SPLICE CONNECTORS. PUSH THE TWO WIRES TO BE SPliced TOGETHER INTO THE OPEN END. BE SURE TO PUSH THE WIRES ALL THE WAY IN (UNTIL YOU CAN SEE THEY HAVE REACHED THE OTHER SIDE).

**NOTE: THE SPLICE IS MORE RELIABLE IF THE WIRE IS NOT STRIPPED. BE SURE TO SNIP OFF THE BARE ENDS OF THE WIRES ON THE CUSTOM**

**LED TAIL TO ENSURE THAT THERE IS INSULATION WHERE THE SPLICE WILL OCCUR. THE SUPPLIED SPLICE CONNECTORS AUTOMATICALLY DISPLACE THE INSULATION AS NECESSARY.**

**ONCE YOU DOUBLE CHECK YOUR COLOR MATCHING AND ARE ABSOLUTELY SURE THAT THE WIRES ARE FULLY INSERTED INTO THE SPLICE CONNECTORS DO THE FOLLOWING:**

11) SQUEEZE THE SPLICE CONNECTORS FIRMLY WITH PLIERS. VISUALLY INSPECT YOUR CONNECTIONS TO SEE THAT THEY HAVE BEEN SPliced PROPERLY INSIDE.

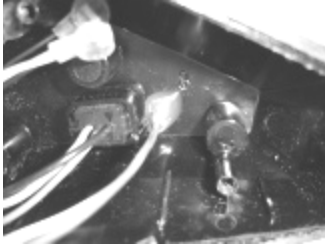


12) RUN THE RED AND WHITE WIRES THROUGH THE HOLE YOU OPENED UP IN STEP 10.

13) POSITION YOUR CUSTOM LED BOARD IN PLACE AS SHOWN AND FASTEN THE BOARD USING THE SCREWS REMOVED FROM THE STOCK BOARD. (READ NOTE BELOW FIRST)

**NOTE: IT IS EXTREMELY IMPORTANT TO MAKE SURE THAT YOU DO NOT PINCH ANY OF THE WIRES UNDERNEATH THE CIRCUIT BOARD.**

**MAKE SURE THE WIRES ARE FREE AND NOT PRESSED UP TIGHT AGAINST ANY OF THE SHARP SOLDER POINTS AS THIS WILL CERTAINLY CAUSE PROBLEMS IMMEDIATELY OR IN THE FUTURE. NEATLY ROUTE THE WIRES UNDERNEATH THE CIRCUIT BOARD SO THEY ARE NOT STRAINED. DO NOT OVER-TIGHTEN THE SCREWS.**



14) AT THIS POINT WE HIGHLY RECOMMEND SEALING THE HOLE YOU OPENED IN STEP 10 FROM THE *INSIDE* OF THE HOUSING USING A HOT-GLUE GUN. IF YOU DO NOT HAVE A HOT GLUE GUN AT THIS POINT, YOU MAY SEAL IT AT A LATER TIME, OR WITH ANOTHER SEALANT. BE SURE ALL THE WIRES ARE THROUGH AND ARE NICELY PLACED.

### **RE-SEALING YOUR LENS**

CONGRATULATIONS! YOU'RE ONE STEP AWAY FROM FULFILLING YOUR WILDEST DREAMS – OK, MAYBE NOT, BUT YOU'RE ALMOST DONE WITH YOUR CUSTOM LED 2005-2008 TRIUMPH SPEED TRIPLE AND SPRINT ST INTEGRATED TAIL KIT!

IT IS SUGGESTED AT THIS POINT THAT YOU PLUG IN THE CUSTOM LED TAIL LIGHT TO VERIFY THAT THE WIRING IS DONE CORRECTLY BEFORE RESEALING THE LENS. THE RUNNING LIGHT AND BRAKE LIGHT SHOULD WORK PROPERLY.

**NOTE: CLEAN THE INSIDE OF THE CLEAR LENS AND ALL THE LEDs AND CIRCUIT BOARD THOROUGHLY BEFORE GLUING IT SHUT. RUBBING ALCOHOL IS EXCELLENT FOR THIS PURPOSE. THOROUGHLY TOWEL DRY WITH A LINT FREE CLOTH, DO NOT ALLOW THE ALCOHOL TO AIR DRY SLOWLY. FINGER PRINTS AND GREASE WILL BECOME OPAQUE WITH CERTAIN GLUE VAPORS WHICH WILL HINDER THE PERFORMANCE OF YOUR TAIL LIGHT AND MAY VOID YOUR WARRANTY ENTIRELY!**

15) RE-SEAL YOUR LENS USING CRAZY GLUE OR GLUE OF YOUR CHOICE. BE SURE TO ALLOW PROPER TIME TO SET BEFORE DOING ANY MORE WORK TO THE LENS. DO NOT OVER DO IT! A LITTLE GLUE REALLY GOES A LONG WAY HERE.

16) AFTER YOU HAVE ALLOWED TIME FOR THE GLUE TO SET, IT IS RECOMMENDED THAT YOU RUN A BEAD OF HOT GLUE OR OTHER SEALANT AROUND THE LENS WHERE YOU HAVE MADE THE CUT.

### **WIRING THE BLINKERS**

17) AFTER ALLOWING THE GLUE ON THE LENS TO SET, MOUNT THE TAIL UNIT BACK ON THE MOTORCYCLE.

18) LOCATE THE BLINKER WIRES ON THE MOTORCYCLE. IF YOU HAVE NOT REMOVED THE STOCK BLINKERS YET, YOU CAN SIMPLY FOLLOW THE WIRES. OTHERWISE THEY ARE GREEN WITH A WHITE STRIPE AND GREEN WITH A RED STRIPE.

**YOU HAVE TWO (2) OPTIONS FOR WIRING YOUR CUSTOM LED BLINKER WIRES.**

A) MAINTAIN THE STOCK PLUG IN TYPE CONNECTION BY CUTTING THE WIRES OFF OF THE STOCK BLINKERS AND USING THE SUPPLIED ORANGE SPLICE CONNECTORS TO SPLICE ON THE FACTORY PLUG TO THE CUSTOM LED WIRES (RECOMMENDED).

**-OR-**

B) USE THE NON-DESTRUCTIVE RED TAP CONNECTORS TO SPLICE INTO THE WIRING ON THE MOTORCYCLE.

WHICHEVER ROUTE YOU DECIDE TO GO, YOU WILL NEED TO CONNECT THE 16" WHITE AND RED WIRES FROM THE CUSTOM LED TAIL AS FOLLOWS:

- GREEN /WHITE STRIPE BLINKER WIRE ON BIKE TO 16" WHITE WIRE FROM CUSTOM LED TAIL.
- GREEN /RED STRIPE BLINKER WIRE ON BIKE TO 16" RED WIRE FROM CUSTOM LED TAIL.

NOTE: IF YOU DECIDE TO REUSE THE STOCK CONNECTOR BY CUTTING THE WIRES OFF OF THE STOCK BLINKERS, YOU WILL HAVE AN EXTRA WIRE ON EACH SIDE, WHICH IS NOT TO BE CONNECTED TO ANYTHING – THIS IS AN UNNECESSARY GROUND WIRE. WE SUGGEST YOU TAPE IT OFF NEATLY.

19) NEATLY ZIP TIE OR TAPE THE WIRES TOGETHER FOR A TROUBLE FREE INSTALL!

ENJOY!

---

## TROUBLESHOOTING

YOU MAY FIND THAT YOUR BLINKERS BLINK FASTER NOW THAT YOU HAVE REMOVED THE STOCK TURN SIGNALS IN THE REAR OF THE BIKE. THIS IS THE DESIGNED RESPONSE OF THE FLASHER RELAY – AND IT IS OK TO LEAVE IT THIS WAY. IF YOU WISH TO SLOW YOUR BLINK RATE, YOU MUST REPLACE YOUR FLASHER RELAY OR ADD LOAD TO THE SYSTEM. THE CUSTOM LED ELECTRONIC LED FLASHER RELAY OR LOAD EQUALIZERS ARE THE PERFECT SOLUTION FOR THIS! SEE [HTTP://WWW.CUSTOMLED.COM](http://www.customled.com) FOR MORE INFORMATION.

IF YOU HAVE REPLACED THE FRONT TURNS SIGNALS WITH LEDS ALSO, YOU MAY FIND THAT YOUR BLINKERS DON'T BLINK AT ALL - YOU MUST REPLACE YOUR FLASHER RELAY OR ADD LOAD TO THE SYSTEM TO FIX THIS PROBLEM. AGAIN, THE CUSTOM LED ELECTRONIC LED FLASHER RELAY OR LOAD EQUALIZERS ARE PERFECT FOR THIS. VISIT [HTTP://WWW.CUSTOMLED.COM](http://www.customled.com).

IF YOUR TAIL LIGHT IS NOT FUNCTIONING PROPERLY, CHECK YOUR CONNECTIONS CAREFULLY! THE CUSTOM LED INTEGRATED TAIL LIGHTS ARE TESTED "GOING INTO THE BOX." YOU CAN SAVE YOURSELF A LOT OF AGGRAVATION BY SIMPLY DOUBLE AND TRIPLE CHECKING YOUR WIRING. IN THE EVENT THAT YOU MAY HAVE A FAULTY UNIT, PLEASE CONTACT YOUR VENDOR FOR ASSISTANCE OR E-MAIL [SUPPORT@CUSTOMLED.COM](mailto:SUPPORT@CUSTOMLED.COM).

---

## DISCLAIMER

BY SELLING YOU THIS PRODUCT, WE MAKE NO GUARANTEE THAT THE USE OF THIS PRODUCT CAN OR WILL HELP REDUCE THE CHANCE OF ACCIDENTS IN ANY WAY, NOR ARE WE LIABLE IN ANY WAY.

FURTHERMORE, IT IS YOUR RESPONSIBILITY TO FOLLOW THE LAWS OF YOUR LOCAL JURISDICTIONS AS FAR AS D.O.T. REQUIREMENTS FOR MARKER LIGHT AND BLINKER LIGHT SHAPE, COLOR AND INTENSITY.

THESE UNITS ARE SOLD "FOR OFF-ROAD USE ONLY."